

TIP OF THE MONTH – October 2014

Import Expenses from Fuel Payment Cards like Magna Slovenia or OMV in travel orders

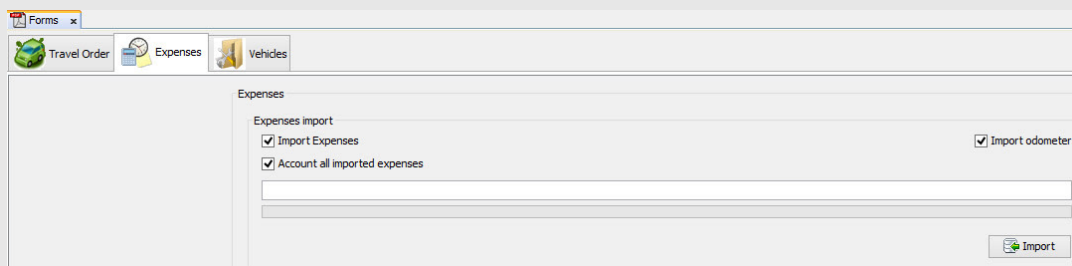
This month we have a debut from our travel orders.

A new feature will come in handy to everyone which company vehicles are using Magna card from Petrol or OMV.

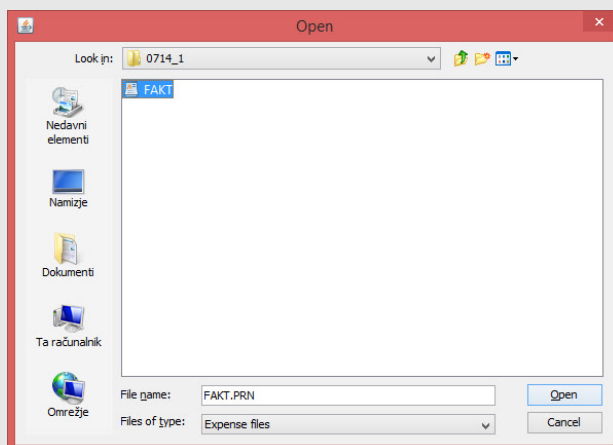
We will introduce automatic import of Expenses from petrol payment card.

1. First, we need to ask [gas distributor](#) to start sending data in the form of software (.FKN). It is then that we can use to import data. Additional service is free.

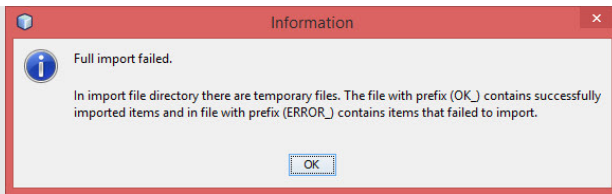
2. When the Petrol sends you data in the above format, it has to be stored from your e-mail address to your local disk. Then we open travel orders program and in window “



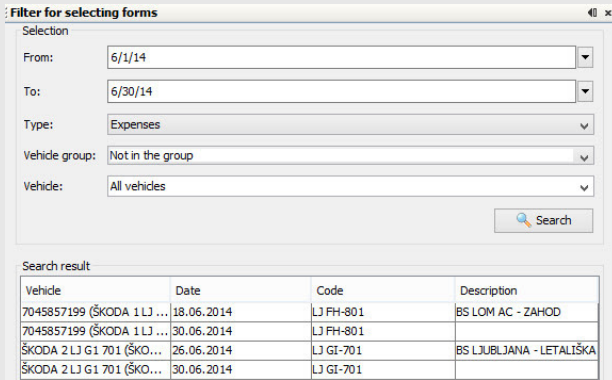
3. Then we find and select .FKN file on our local disk.



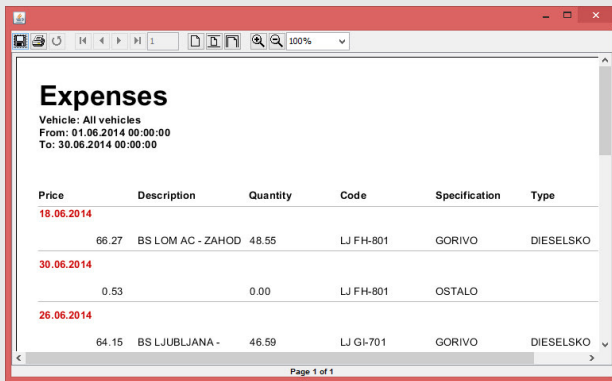
4. When the file is confirmed, program will perform an automatic data import. In doing so, we will encounter the following figure. Most often it happens that we will come forward to the import failed completely. This occurs mainly due to two reasons. Firstly, because titles are not harmonized registration numbers from the Magna with those who are in our administration. Secondly, because the company does not have all vehicles equipped with tracking. In any case, travel orders will transfer all remaining vehicles.



5. Then in the window "Filter for the selection of forms" is selected period for which we have made or import cost data.



6. All costs can also be printed. The figure below shows the preview.



Best regards!

Gašper Pozdrec

Copyright © 2014 Sledenje d.o.o., All rights reserved.
 Vsak mesec vam bomo poslali namig meseca, ki bo omogočal vaše lažjo uporabo našega programa. Če želite, da vam v bodoče ne poizkušamo tega e-maila nas prosim obvestite.