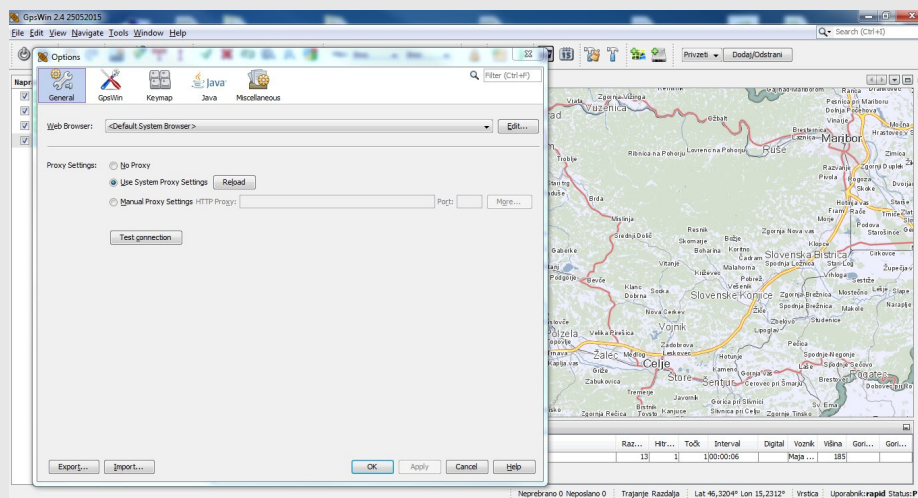


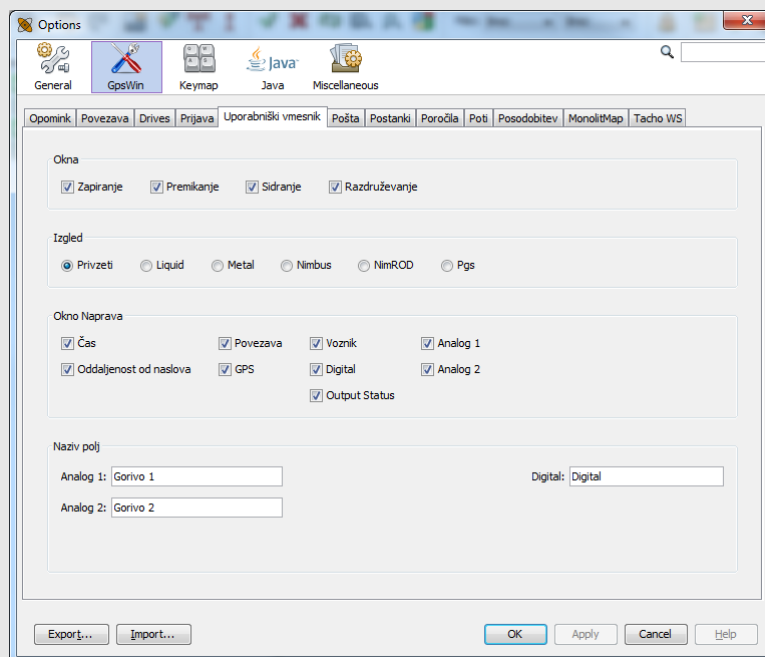
This monthly tip is to set preventing for closing tabs.

Due to busy schedule and a desire for quick information results it can happen that we close Window/Tab. These happens when we accidentally click on X in a certain window he disappears. The solution lies in setting a parameter of closure tabs.If we check this option in the window Gpswin-u it always remains static.

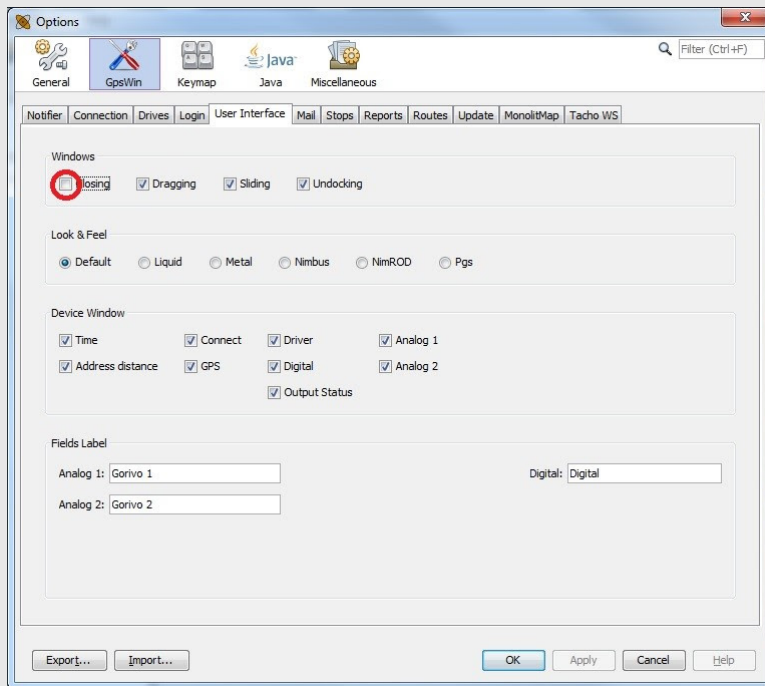
1. On the Toolbar select **Tools**, then select **Options**.



2. In the selected window, select the second tab **GpsWin** and then you choose **User Interface**.



3. Finally, deselect the option **closing** at parameter **windows** and your tabs are fixed arranged in the future. It is also important to save the change you have made. Save it by pressing the OK button on the bottom. Finally you must restart the program so the new settings will be stored.



Copyright © 2015 Sledenje d.o.o., All rights reserved.
Vsak mesec vam bomo poslali namig meseca, ki bo omogočal še lažjo uporabo našega programa. Če želite, da vam v
bodoče ne pošiljamo tega e-maila nas prosim obvestite.