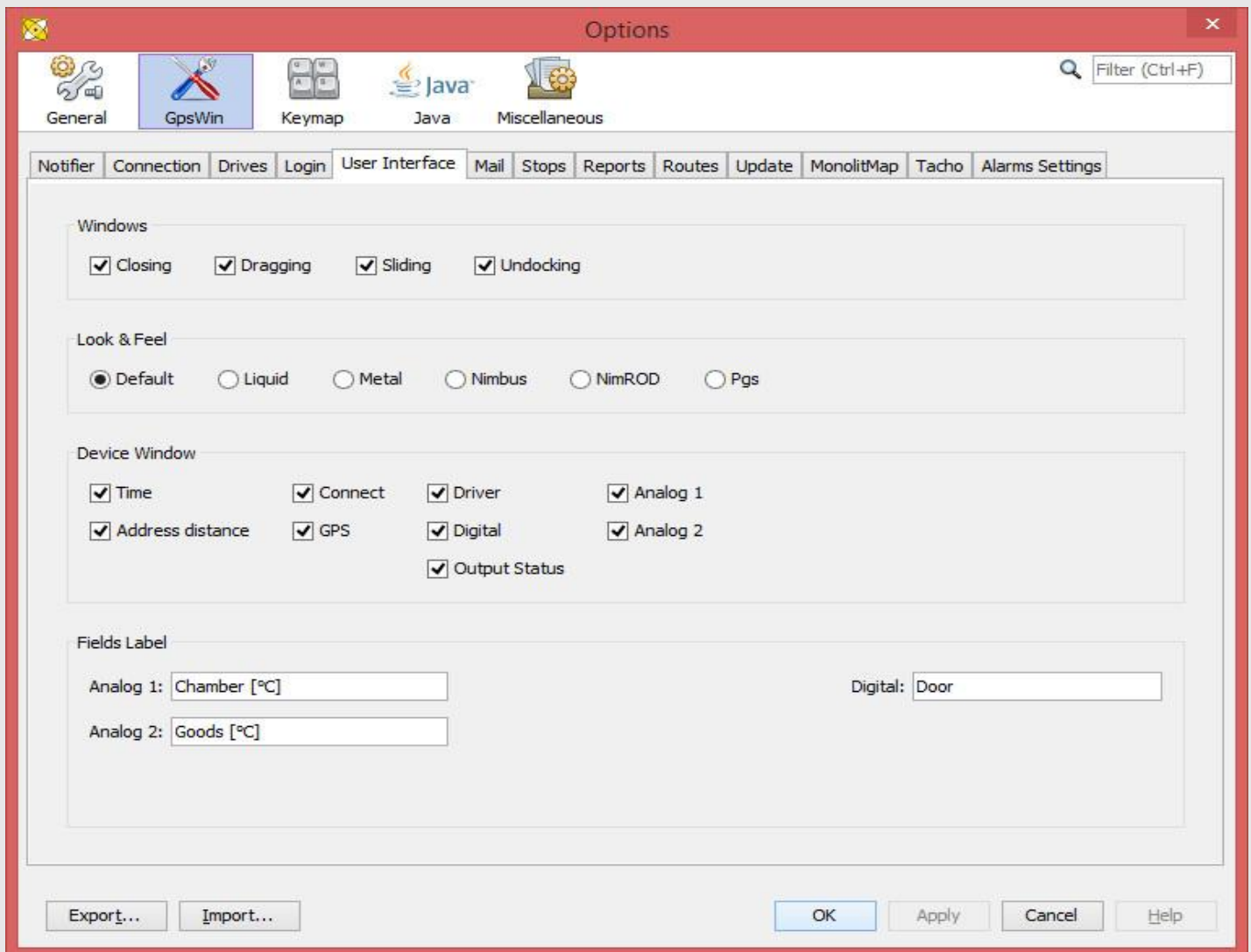


In this month hint we will present how we can change the user interface according to your preferences.

To get to the basic settings of user interface you need to first open the *Options* window (*Tools > Options*) and select *GpsWin* tab and then under this tab select *User Interface* tab.



You can find the following setting in this tab.

- Windows – settings for locking closing, dragging, docking, sliding of some basic windows. You lock them by unchecking the options
- Look & Feel – application look and feel setting
- Device Window – here you set which categories should be visible in Device window. If any of the category isn't actual for then you just simply uncheck it.
- cFields Label – in this section to you can set different name for the fields that shows you the status of sensors Analog 1, Analog 2 and Digital