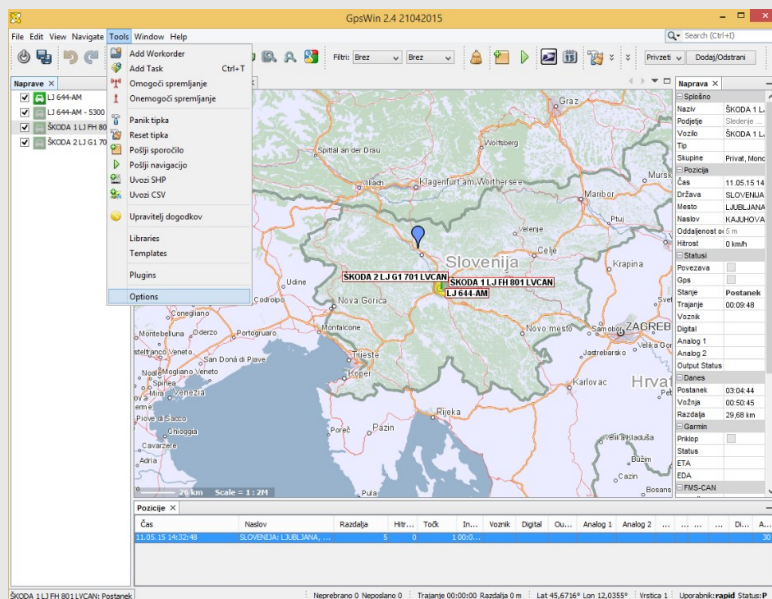


TIP OF THE MONTH – AUTOMATIC LOGIN ON START-UP

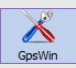

In this hint of the month we will introduce you the possibility of automatic login on start-up. Automatic login on startup is a useful solution for all who has problems with remembering username and password to login in the Gpswin. Below we will demonstrate how to set setting of auto-login.

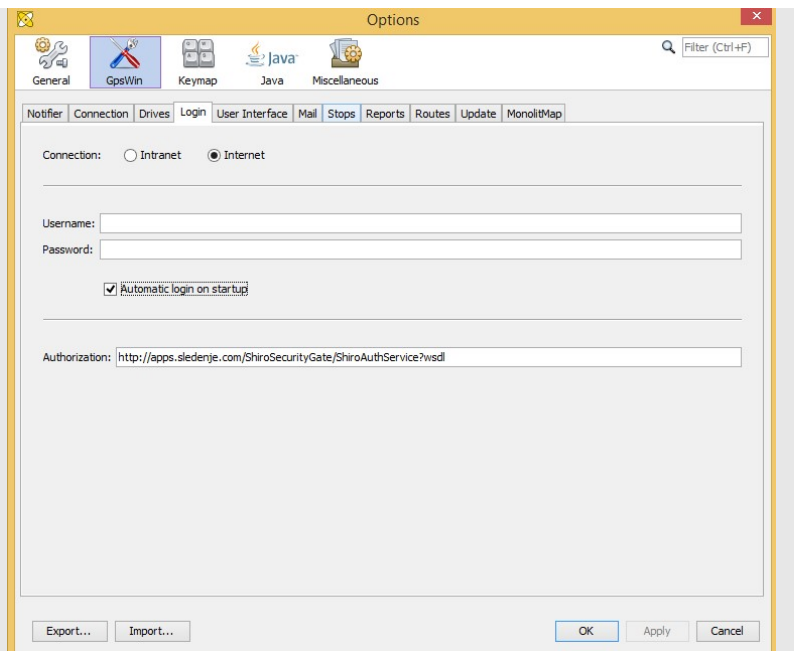
How to set Automatic login on:

1. In Gpswin click with your mouse in the toolbar on the "tools" and then with mouse move through the box and click with left button on "options". (demonstrated on picture 1 below)



2. You get the similar window as shown on picture 2. Then In window you chose

button "GpsWin"  and under button "login" 



Picture 2

3. In field "User name" and "Pasword" you type users informations and mark icon "Automatic login on startup".

Username:

Password:

Automatic login on startup

4. So you solve dillema of logging every time you are using Gpswin. In the event that you would like in the future to repay login on startup just tick out "Automatic login on startup" and you will return the application to its original state.